

BannerFlex Patent # 4880195

### PLEASE READ THIS FIRST!

See Page 2 for a list of tools required to install KBW BannerFlex Brackets. The buyer assumes full responsibility for determining that the light poles (or other substrates) are able to withstand the increased wind load generated by the installation of one or more banners of a particular size on each pole using top and bottom KBW BannerFlex brackets.

We recommend contacting the pole manufacturer or a structural engineer to assist in making this determination.

For older poles, we suggest visual inspections to determine the current structural integrity of the base connection as well as other portions of the pole, including the luminaire and its components.

If you have any questions concerning bracket installation, contact your KBW Sales Representative.

KBW designed the newest BannerFlex Metro bracket in response to requests for a smaller adjustable bracket to fit mid-sized banners on fluted and ornamental poles. Metropolitan areas often present aesthetic and engineering challenges which the streamlined KBW Metro banner bracket solves.

### General Installation Guidelines

- Read these instructions carefully to understand the KBW “canting system”, how to “rock” the arms into place and how the fiberglass arms keep the banners tight.
- Metro is designed to be attached to poles with bolts, screw-gear banding, or tool-applied solid banding.
- Always verify that high profile traffic, such as buses and trucks, will not come in contact with the installed brackets.
- “Fluted” poles sometimes do not allow an installation to “face” a particular direction due to the location of the flutes. We have found that slight angles away from perpendicular are not objectionable. Contact your sales representative for assistance.
- These instructions specifically explain banding the bracket to the poles. If bolts are used, continue to refer to these instructions for placement and proper use of the “canting feature.”

### Maintenance Guidelines

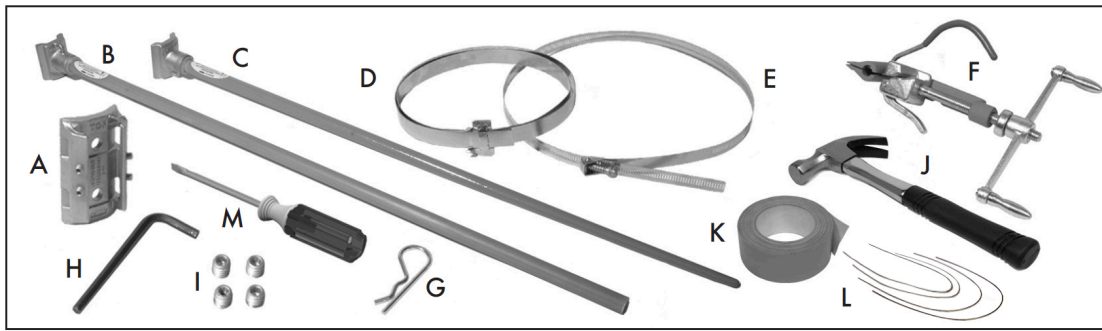
- We recommend new installations be visually inspected 30 days after initial installation to insure brackets are tight and trim, and every 60 days thereafter. Also, inspection should take place after unusually heavy windstorms, as abnormal gusts and flying debris may affect the quality of an installation.
- Banners which “whip” or “flutter” in the wind are not installed properly. This may cause undue wear and tear on the banner and eventually release from the bracket, which can heavily damage the banner. Avoid this problem with inspections as suggested above. Repair loosened banners immediately.
- Banners with puckers or stress lines along the fabric are too tight. Loosen and adjust the lower arm until banner is taut but smooth (see “Troubleshooting” on Page Three).

### The KBW Banding Guideline Chart

This is a general guideline for the minimum banding strength necessary for single and double banner installations of various sizes for normal, non-catastrophic winds up to 70mph. Note: The quality of each installation affects the ultimate strength. Be sure bands or bolts are properly applied and at maximum pressure.

| <b>yes</b> - combination will work successfully in typical wind conditions (70 mph)<br><b>no</b> - combination will not perform in typical, long-term conditions<br><b>n/a</b> - does not apply; size combination impossible<br><b>N/R</b> - combination will work, but is not recommended<br><b>Max Total</b> - the maximum total sq ft banner fabric for 2 banners / pole |                  |           |     |           |     |           |     | <b>Banding Options for Metro</b><br>1/2" 9/16" or 5/8" Screw Gear Bands ( <b>SGB</b> )<br>Single wrap of 3/4" tool-applied banding<br>Double wrap of 3/4" tool-applied banding |     |           |     |           |     |                                   |     | <b>Bolting Options</b><br>Brackets may be bolted in lieu of banding.<br>See chart. |     |                                     |                                                     |
|-----------------------------------------------------------------------------------------------------------------------------------------------------------------------------------------------------------------------------------------------------------------------------------------------------------------------------------------------------------------------------|------------------|-----------|-----|-----------|-----|-----------|-----|--------------------------------------------------------------------------------------------------------------------------------------------------------------------------------|-----|-----------|-----|-----------|-----|-----------------------------------|-----|------------------------------------------------------------------------------------|-----|-------------------------------------|-----------------------------------------------------|
|                                                                                                                                                                                                                                                                                                                                                                             |                  | 18" x 36" |     | 24" x 48" |     | 30" x 60" |     | 30" x 72"                                                                                                                                                                      |     | 30" x 84" |     | 30" x 94" |     | * 46" x 94"<br><i>(see below)</i> |     | * 30" x 120"<br><i>(see below)</i>                                                 |     | Maximum<br>Single<br>Banner<br>Size | Maximum<br>Total Sq Ft<br>for 2 Banners<br>Per Pole |
|                                                                                                                                                                                                                                                                                                                                                                             | # banners        | 1         | 2   | 1         | 2   | 1         | 2   | 1                                                                                                                                                                              | 2   | 1         | 2   | 1         | 2   | 1                                 | 2   | 1                                                                                  | 2   |                                     |                                                     |
| KBW-Metro                                                                                                                                                                                                                                                                                                                                                                   | 1/2" SGB         | Yes       | Yes | No        | No  | No        | No  | No                                                                                                                                                                             | No  | No        | No  | No        | No  | No                                | No  | No                                                                                 | No  | 20" x 36"                           | 10                                                  |
|                                                                                                                                                                                                                                                                                                                                                                             | 9/16" SGB        | Yes       | Yes | Yes       | No  | No        | No  | No                                                                                                                                                                             | No  | No        | No  | No        | No  | No                                | No  | No                                                                                 | No  | 30" x 54"                           | 16                                                  |
|                                                                                                                                                                                                                                                                                                                                                                             | 5/8" SGB         | Yes       | Yes | Yes       | Yes | Yes       | No  | Yes                                                                                                                                                                            | No  | No        | No  | No        | No  | No                                | No  | No                                                                                 | No  | 30" x 72"                           | 16                                                  |
|                                                                                                                                                                                                                                                                                                                                                                             | Single Wrap 3/4" | Yes       | Yes | Yes       | Yes | Yes       | Yes | Yes                                                                                                                                                                            | No  | Yes       | No  | No        | No  | No                                | No  | No                                                                                 | No  | 30" x 84"                           | 25                                                  |
|                                                                                                                                                                                                                                                                                                                                                                             | Double Wrap 3/4" | Yes       | Yes | Yes       | Yes | Yes       | Yes | Yes                                                                                                                                                                            | No  | Yes       | No  | No        | No  | No                                | No  | No                                                                                 | No  | 30" x 84"                           | 30                                                  |
|                                                                                                                                                                                                                                                                                                                                                                             | Bolted           | Yes       | Yes | Yes       | Yes | Yes       | Yes | Yes                                                                                                                                                                            | Yes | Yes       | Yes | No        | No  | No                                | No  | No                                                                                 | No  | 30" x 84"                           | 30                                                  |
| KBW-Metro<br>w/Airow                                                                                                                                                                                                                                                                                                                                                        | 1/2" SGB         | n/a       | n/a | Yes       | No  | No        | No  | No                                                                                                                                                                             | No  | No        | No  | No        | No  | No                                | No  | No                                                                                 | No  | 30" x 54"                           | 16                                                  |
|                                                                                                                                                                                                                                                                                                                                                                             | 9/16" SGB        | n/a       | n/a | Yes       | Yes | Yes       | No  | Yes                                                                                                                                                                            | No  | No        | No  | No        | No  | No                                | No  | No                                                                                 | No  | 30" x 60"                           | 18                                                  |
|                                                                                                                                                                                                                                                                                                                                                                             | 5/8" SGB         | n/a       | n/a | Yes       | Yes | Yes       | No  | Yes                                                                                                                                                                            | No  | Yes       | No  | No        | No  | No                                | No  | No                                                                                 | No  | 30" x 84"                           | 20                                                  |
|                                                                                                                                                                                                                                                                                                                                                                             | Single Wrap 3/4" | n/a       | n/a | Yes       | Yes | Yes       | Yes | Yes                                                                                                                                                                            | Yes | Yes       | Yes | N/R       | N/R | n/a                               | n/a | No                                                                                 | No  | 30" x 94"                           | 35                                                  |
|                                                                                                                                                                                                                                                                                                                                                                             | Double Wrap 3/4" | n/a       | n/a | Yes       | Yes | Yes       | Yes | Yes                                                                                                                                                                            | Yes | Yes       | Yes | Yes       | Yes | n/a                               | n/a | N/R                                                                                | N/R | 30" x 94"                           | 40                                                  |
|                                                                                                                                                                                                                                                                                                                                                                             | Bolted           | n/a       | n/a | Yes       | Yes | Yes       | Yes | Yes                                                                                                                                                                            | Yes | Yes       | Yes | Yes       | Yes | n/a                               | n/a | N/R                                                                                | N/R | 30" x 94"                           | 40                                                  |

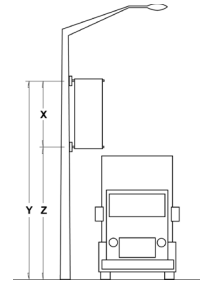
\* note: this size is not covered by warranty



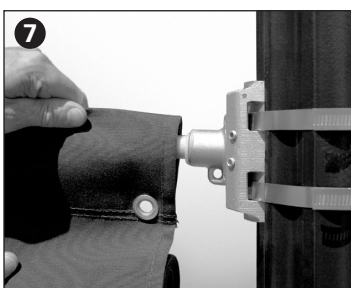
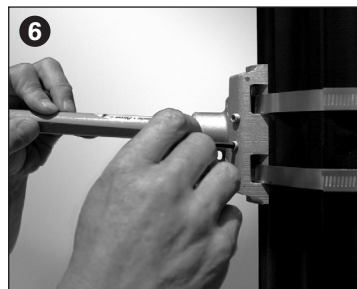
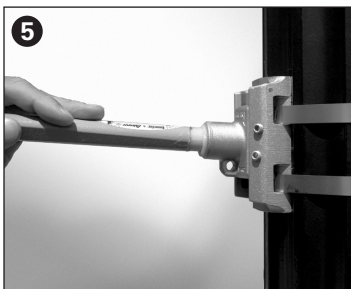
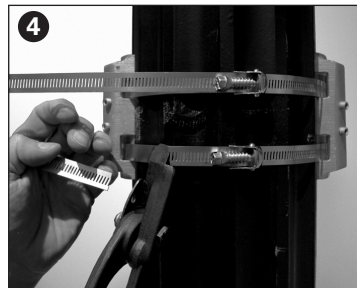
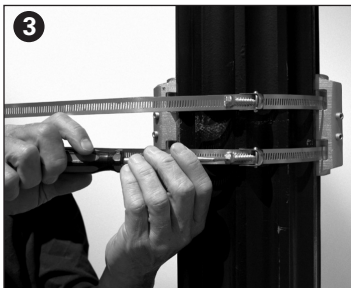
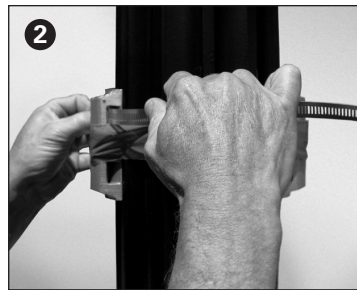
- A. Main Pole Casting
- B. Standard Arm/Arm Castings
- C. Premium Airow Rod
- D. Banding/Buckle
- E. Screw Gear Banding
- F. Banding Tool
- G. Hitch Pin
- H. Hex/Allen Wrench
- I. 4 Dacromet® Set Screws
- J. Hammer
- K. Duct Tape
- L. #18 Gauge Wire Ties
- M. Screwdriver/Powerdriver

## PLEASE READ COMPLETELY BEFORE BEGINNING INSTALLATION!

Start with the top banner bracket by mounting upper Main Casting(s) (A) first and complete all “top” procedures, including mounting the banner(s) and #18 Gauge Wire Ties (L), before mounting lower casting(s). The upper castings must be mounted at a height that prevents any portion of the completed banner installation from being hit by vehicular traffic or pedestrians (see diagram right). You may use these instructions for both single and double banner per pole installations. First, inspect every pole to see if anything on the pole would wear against the banner fabric. Items to look for include signs and banding, flag pole holders, power or telephone lines or any other abutments on the pole that might come into contact with the banner. Any object contacting a banner will eventually damage the banner, or the object, or both.



## SCREW GEAR BANDING INSTRUCTIONS



**1** Using Duct Tape (K), temporarily hold casting(s) in place against utility pole at desired height. The word “TOP” on the Main Pole Casting (A) must be pointing up at ALL times for both Main Castings at both upper and lower locations.

**2** Thread Screw-Gear Band (E) through the casting's banding ports and wrap around the pole. For double banner installations put the same band through both casting's band ports. Note: Put a slight arc or bend in the band to assist with threading it into the rounded profile of the casting.

**3** Before screwing banding too tightly, re-check Main Casting locations to be sure they have stayed in position. Secure banding as tightly as possible without over-tightening and damaging threads. Initially, this may take some trial and error to get the “feel” of a tight and secure installation. We recommend power tools for this tightening procedure, to save time.

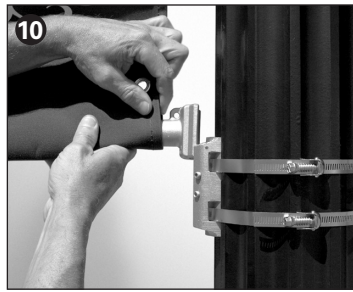
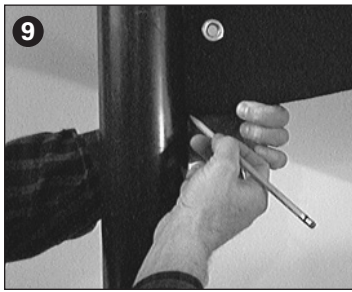
**4** Clip excess banding for a trim, finished look and to avoid damaging the banner. Consider tucking the “tails” into the banding ports, being careful not impede the Arm Casting from sliding freely.

**5** Remove Hitch Pin (G) from Main Casting and install upper Arm Casting (B or C) so the “BANNER” points toward where the banner will be located. Position the Arm Castings in the center of the Main Casting – this will allow some minor length adjustment either up or down, should the banners require adjustment. Re-install Hitch Pin.

Note: BannerFlex Arms are “canted” to put the banner in tension. This means that without a banner installed the upper arms will angle up slightly and the bottom arms will angle down slightly. When the banner is properly installed, the installation will be taught and trim. The fiberglass will bend down at the top and up at the bottom to make the banner appear square and stretched. This allows the wind to be immediately transferred to the fiberglass for deflection.

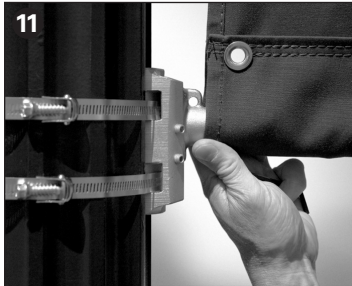
**6** Tighten the Dacromet® Set Screws (I) with the appropriate Allen Wrench (H). Power tools are recommended here as well, for a speedy installation.

**7** Slide top banner hem over fiberglass arm, grommet side first. Grommet side is closest to the pole. Allow banner to unfurl. Place banner hem up to (or over) the Arm Casting. Either look is acceptable but we recommend each banner be installed the same way for best appearance.



**8** Feed the (L) #18 Gauge Wire Tie through the banner grommet and through the “eye” hole in the Arm Casting. This attachment is required to prevent the banner from sliding off.

Top portion of installation is now finished. Now you are ready to install the bottom Main Castings.



**9** Use the banner as a guide to determine the mounting position of the bottom Main Casting. Pull the banner down taut and clearly mark a guide line on the pole at the lowest edge of the banner. Position Main Casting so the bottom edge is 1” lower than the guideline.

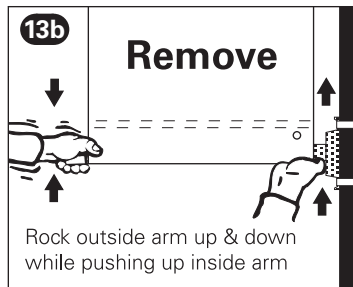
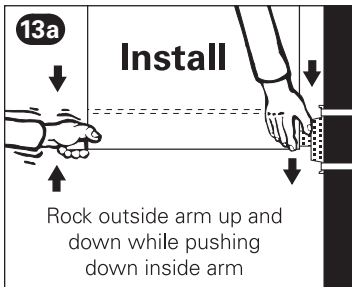
Repeat steps 1 through 7 to mount lower Main Castings in place.

**10 11** Before putting Arm Castings into Main Castings, slide the banner over the fiberglass arm.

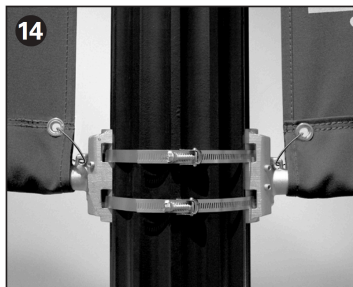
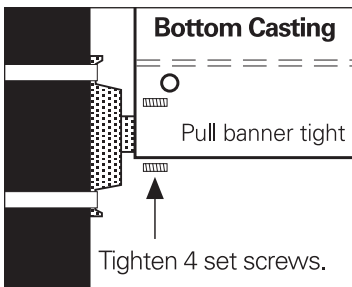
**12 13a&b** These next steps are very important! Please read carefully!

#### DO NOT USE EXCESSIVE FORCE OR TOOLS! IT IS NOT NECESSARY

- Refer to illustration 13 to understand how to slide the Arm Casting into the Main Casting. Use a rocking action to position the Arm into place. Rock the Arm Casting until it is as far down into the Main Casting as possible and banner is taut and trim. If the banner(s) appear “pigeon-toed” or “fanned out,” please see TROUBLESHOOTING.



**ROCKING THE ARM INTO PLACE – VERY IMPORTANT!** Each bottom arm can be easily “rocked” into position –see illustrations. Rock the arm assembly in the casting slot by pushing down on the outer end of the fiberglass arm and at the same time pressing the top of the Arm Casting downward with a thumb. Keep rocking the arm until it is seated as far down as it will go and the banner is taut. The arm should remain in position to tighten the Dacromet Set Screws (I). Note: excessive hammering may damage the Casting and voids the KBW warranty.



**14** Secure the bottom of the banner to Main Casting with a #18 Gauge Wire Tie through the banner grommet and through the “eye” hole in the Arm Casting. This attachment is required to prevent the banner from sliding off.

**15** CONGRATULATIONS! The banner installation is complete! If the banners appear “pigeon-toed” or “fanned out,” please see TROUBLESHOOTING.

#### TROUBLESHOOTING for Banner Installation and Maintenance

##### A ) Are banners “pigeon-toed” or not square or perpendicular to pole?

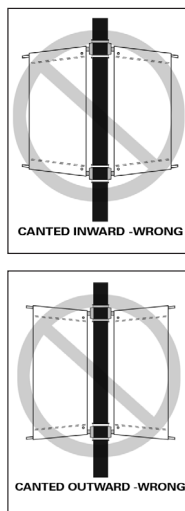
This indicates that either the upper or lower Arm Castings are not “seated” properly in the Main Castings. The pigeon-toed look can be fixed by spreading the upper and lower arms apart more. Either lower the bottom Arm Casting further into the Main Casting, or raise the upper Arm Casting further into the top Main Casting. If there is not enough space in the Main Castings for this, either raise the upper Main Casting or lower the bottom Main Casting on the pole.

##### B ) Is either the top of the banner slanted down significantly or the bottom of the banner slanted up significantly, or both?

This indicates that one or both of the arms are installed upside down. Make sure that the arrows beside the word, “BANNER” on the Arm Casting are pointed toward the actual banner.

##### C ) Is the banner loose or flapping around?

This usually indicates that the Arm Castings are not seated properly to keep the banner trim and tight. Review numbers 10 through 14 in the Installation Instructions.



*Illustration shows correct arm angle of finished installation*

##### D ) Are the banners puckered or do they have stress lines in them?

This may occur with certain fabrics and certain size banners. It results from the banner being stretched too tightly or the arms not being parallel (see “A” and “B” above). We recommend sliding the banner hem further over the Arm Casting’s aluminum stub to relieve some of the puckering.



### **E ) Are you seeing tearing or ripping of the banner fabric?**

With the high-quality KBW banner fabrics, warranted for 2 years, you should never see this unless something is rubbing against the banner or if the installation has been allowed to flap around, without proper maintenance for two or more weeks. Other non-KBW banner fabrics may simply be too weak for exterior use. Call KBW or your dealer for advice on this topic.

First, check to see if installation is trim and tight. Next, see if anything on the utility pole has been allowed to wear against the banner fabric. This could be a sign, flag pole holder, power or telephone line or other abutment on the pole. Anything like this will always, eventually damage the banner.

### **F ) My poles are tapered. How can these be installed on tapered poles?**

See item G directly below

### **G ) Are the Main Castings loosening on the pole and/or "crawling" up a tapered pole?**

Any time a Main Casting is loose it is typically a result of three causes. First and usually, it may be that the fastening, such as banding or Screw-Gear Banding is not applied properly and is not tight enough. With larger banner installations where "double wrapping" of 3/4" banding is specified, double wrapping means the band needs to go around the pole twice before the banding buckle is clamped. For screw-gear applications be sure that the correct size and strength of band has been applied and that it has been tightened properly. Note: almost every light pole is tapered. When the KBW bracket system has been correctly applied, it will not loosen or crawl up a tapered pole.

The second most common reason an installation may loosen is if it has been hit by a truck, bus, fire engine or other such vehicle that has come in to contact with the bottom arm.

Third, an unusual or catastrophic windy condition may cause loosening or damage by flying objects hitting the installation.

---

## **KBW BannerFlex Metro Warranty**

KBW BannerFlex banner brackets are guaranteed for ten (10) years against defects in material and workmanship when installed according to KBW installation instructions. Important: Bracket must be installed according to these instructions and banding method must be tight and secure at all times. Also, inspect your bracket installation 30 days after initial installation and every 60 days thereafter, making any necessary adjustments immediately. Brackets which have been damaged by trucks, buses, etc. or flying debris are not warranted against that type of abuse.

---

## **Caring for your screen printed/textile banners**

We suggest the following when storing your KBW banners for the season (Note: Other banner manufacturers caution against ink cracking and peeling if stored improperly. KBW inks will not crack or peel but we caution against folding and creasing banner simply from an appearance standpoint):

- Make sure banners are clean and dry before rolling up.
- Always roll banners to prevent creasing. Do not fold.
- Avoid crushing the banners. Do not store other items on top of them.

---

## **Cleaning KBW Banners**

1) Lay banners on clean surface such as concrete or asphalt with slope to drain.

2) Use a garden hose with moderate velocity spray and rinse banners. Lukewarm water works best, but cold water is acceptable.

3) For screen printed textile banners, use a soft bristle brush and a small amount of mild soap (such as liquid dish soap). For vinyl screen printed and digital banners, use a sponge. Always test a portion of ink before cleaning entire banner.

4) Rinse and hang to dry.

Note: Do not dry clean banners. Avoid machine washing as agitator may rub and damage ink. Do not use a commercial dryer to dry.

---

## **Smaller Utility Poles**

Call your KBW Sales Representative for information on our KBW BannerFlex JR bracket, for smaller banners, such as 18" x 36".



a product of

**Consort Display Group**

2129 Portage Street  
Kalamazoo, MI 49001  
(800) 525-6424  
(269) 388-4532

FAX: (269) 388-2018

FX: 888.880.6341

**www.consort.com**

info@consort.com