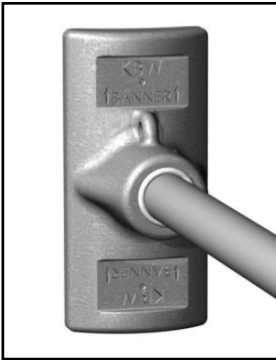


## KBW BannerFlex® JR Bracket



The KBW BannerFlex JR bracket was specifically designed for use with smaller banners while maintaining comparative strength to our line of other BannerFlex brackets. The one-piece BannerFlex JR is perfect for banners of 24" x 48" or smaller. Screw-gear banding allows for ease of installation and adjustment. BannerFlex JR works exceptionally well on smaller diameter or decorative light poles and is available with permanent or removable fiberglass arms.

### Product Testing Program

KBW by Consort utilizes full-scale wind tunnel and material testing facilities along with computer-aided design programs to develop and affirm our product components, capabilities, features and warranties. For specific engineering data, including our BannerFlex Wind Force Calculator, visit us at [www.kalamazoobanner.com](http://www.kalamazoobanner.com) or contact your KBW/Consort Sales Representative at (800) 525-6424.

## FEATURES AND BENEFITS



### KBW BannerFlex JR Main Casting

FEATURES	BENEFITS
356T6 Heat-Treated Cast Aluminum	<ul style="list-style-type: none"> <li>• Superior strength and durability</li> <li>• Corrosion resistant</li> <li>• Accepts powder coating</li> </ul>
Eyelet Included in Casting	<ul style="list-style-type: none"> <li>• Allows for wire ties to be utilized through both the banner grommet and casting to secure banner</li> <li>• Added security from loss or theft</li> </ul>
Banding Channels	<ul style="list-style-type: none"> <li>• Easily allows positioning of up to 3/4" wide screw-gear bands to fasten casting to pole</li> </ul>
Removable Arm Availability	<ul style="list-style-type: none"> <li>• Allows quick change of banners for seasons and events</li> <li>• Less obtrusive when banners are not in use</li> </ul>

### KBW BannerFlex Standard 13/16" Round Fiberglass Arm

FEATURES	BENEFITS
Pultruded Fiberglass Arm	<ul style="list-style-type: none"> <li>• Provides flexibility while maintaining strength</li> <li>• Increases banner longevity</li> </ul>

